

# KNOB CYLINDER LOCK

## ITEM NO.SS587-ET

MECHANISM: STAINLESS STEEL

BACKSET: 2.3/8" (60MM)

LATCHBOLT: 1/2" STAINLESS STEEL THROW

DOOR THICKNESS: 1-3/8" TO 1.3/4"

CYLINDERS: BRASS 6-PIN

KEYS: 3 KEY INCLUDED (NICKEL PLATED STEEL)

FINISH: AS PER CLIENT REQUIREMENT.

Wrought stainless steel trim, with steel chassis holds lock firmly with zinc chromate plated to resist corrosion.

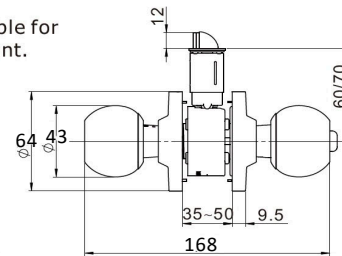
Push in button function.

1"x2-1/4" (25x57mm)  
Square standard.

1/2" throw  
deadlatch completely. Stainless  
Steel latchbolt and faceplate.

Cylindrical body provides  
great strength and durability.

Cylinder knob removable for  
rekeying or replacement.



High precision 6-pin full brass cylinder.  
Brass key nickel plated can be construction  
keyed and master keyed as required.